

FEATURES

- Rigid construction
- Laser welded diaphragm
- Optional exotic materials

APPLICATION

- Separation systems
- Isolation applications
- Viscous & corrosive media
- High-pressure applications
- High vibration application



Type S08

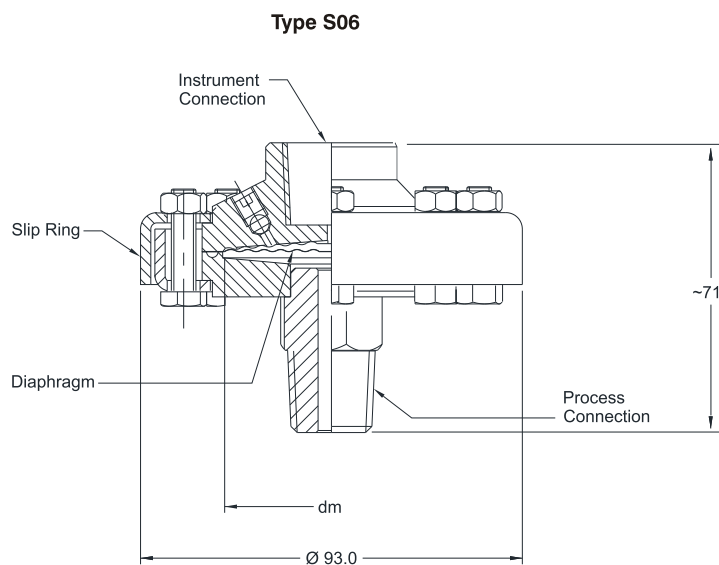


Type S07

STANDARD SPECIFICATIONS

Range type	: -1...20 bar / - 1...60 bar
	: -1...210 bar
Top chamber material	: AISI 304 SS
Diaphragm	: AISI 316L SS
Gaskets	: PTFE
Bottom chamber material	: AISI 316 SS
Instrument connection	: 1/2" NPT (F) / 1/2" BSP (F)
Sealing fluid	: Silicon DC 200 (-40...205°C)
Process connection	: 1/2" NPT (M) / 1/2" BSP (M)
Coupling flanges & hardware	: Pressed Steel - Cup design (plated) / AISI 304 SS
Assembly	: Direct

DIMENSIONAL DRAWING

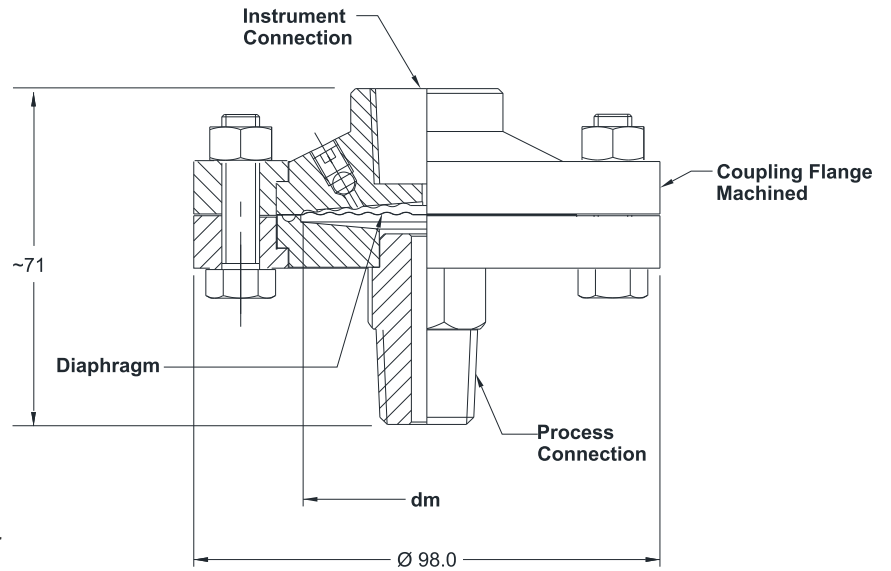


S06 -1...20 bar

All dimensions are in mm.

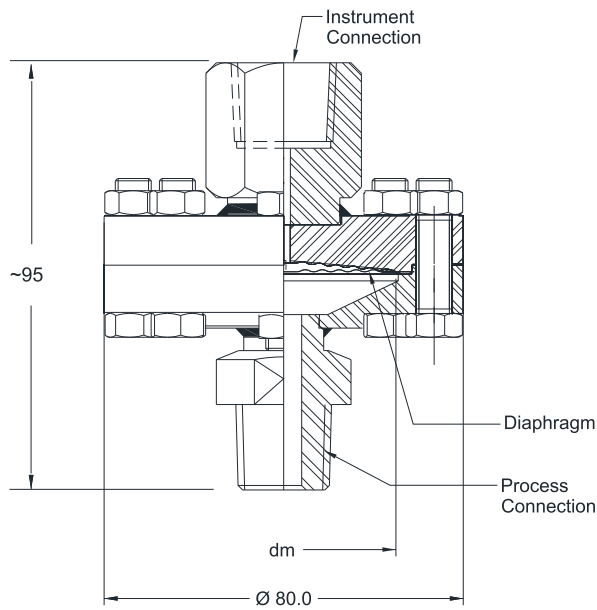
DIMENSIONAL DRAWING

Type S07



S07 -1...60 bar

Type S08



S08 -1...210 bar

ORDERING CODES

1. RANGE TYPE

S06	-1...20 bar
S07	-1...60 bar
S08	-1...210 bar

2. TOP CHAMBER MATERIAL

LC	AISI 304 SS	LF	AISI 316 SS
LG	AISI 316L SS		

3. DIAPHRAGM MATERIAL

DG	AISI 316L SS	DM	Monel 400
DO	Hastelloy C-276	DQ	Inconel 600/625
DV	Titanium	DW	Tantalum
D9	Gold Plated	DP	PTFE (Max 10 BAR)
DP	Hastelloy C22		

4. GASKETS

RP	PTFE	RM	Metal*
-----------	------	-----------	--------

5. BOTTOM CHAMBER MATERIAL

NF	AISI 316 SS	NM	Monel 400
NG	AISI 316L SS	NV	Titanium
NO	Hastelloy C-276	N1	PVC
NQ	Inconel 600/625		
N4	Polypropylene		

6. INSTRUMENT CONNECTION

02B	1/4" BSP (F)	04N	1/2" NPT (F)
02N	1/4" NPT (F)	04B	1/2" BSP (F)

7. SEALING FLUID

OA	Silicon DC 200 [-40°C to 200°C]
OF	Food grade oil [-20°C to 140°C]
OI	Syltherm 800 [-40°C to 380°C]
OL	Silicon DC 710 [0°C to 250°C]
OG	HT 270 (PFPE) [-50 ... +250 °C]
OB	47V20 silicon oil [-50 ... +240 °C]

8. PROCESS CONNECTION

12B	1/4" BSP (M)	13B	3/8" BSP (M)
14B	1/2" BSP (M)	12N	1/4" NPT (M)
14N	1/2" NPT (M)	02N	1/4" NPT (F)
04N	1/2" NPT (F)	02B	1/4" BSP (F)
04B	1/2" BSP (F)	14M	M20X1.5mm(M)

9. COUPLING FLANGES & HARDWARES

L0	Press Steel - Cup design (Coated)
LD	AISI 304SS - Machined
LH	AISI 316 SS - Machined
LJ	High-tension with Plated - Nut-Bolt

10. PROTECTION ON WETTED PARTS

PA	PTFE lining on bottom chamber ^{3,4}
PB	PTFE protection for diaphragm (Positive Range Only)
PC	PTFE coating on diaphragm or wetted parts

11. ASSEMBLY

B8	Direct
B9	Remote(capillary)

12. CAPILLARY

OU	AISI 304 SS	OV	AISI 316 SS
-----------	-------------	-----------	-------------

13. ARMOUR

OX	AISI 304 SS	OY	AISI 316 SS
OZ	PVC (Ambient max. 60°C)		

14. REMOTE MOUNTING LENGTH

XXXX	1000 mm up to 6000 mm (For longer lengths, contact factory)
-------------	--

15. OTHER OPTIONS

XZ	Dry seal
HL	Helium leak test
TC	Material test certificate 3.1
TN	Tested to NACE Standard
TQ	Hydrogen service (Consult factory)
TF	PMI Test
TG	IGC Test

Ordering Example : D102-S06-LC-DG-RP-NF-04N-OA-14N-L0-XX-B8

NOTES:

1. Other sealing liquids are available, contact factory for further details.
2. All metal diaphragms are laser welded to the Top Chamber.
3. While choosing option PA for diaphragm DG, option PB has to be selected mandatory.
4. PTFE lining to be chosen on parallel threads.
5. Maximum pressure rating 10 bar.